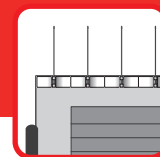




# ECOPIC® EV6

D A T A S H E E T

T H E D I S S U A S I V E P R O C E S S F O R B I R D S R E M O V A L



ECOPIC® EV6 is adapted to shutters having a maximum thickness of 3 cm, suitable for :

- Wood shutters
- Aluminium shutters

## WARNING :

**ECOPIC® EV6 must be installed on the outside face of the shutters.**  
**The plastic base (polycarbonate) must be fixed at the edge of the shutters.**  
**The spikes must exceed the maximum above the shutters for perfect efficiency.**

## MAIN FEATURES :

- Economical
- Ready to use
- Stainless steel spikes, quality spring 1 800 N/mm<sup>2</sup>
- Polycarbonate support, mass UV-stabilised and 100% virgin polycarbonate base
- Anti-UV treated and anti-fungal silicone SELFIXING® 280 ml

## TECHNICAL DATAS : ECOPIC® EV6 :

- 3 units for 1 linear meter
- Size of unit : length. 36 x width 1 x height 11cm.
- Mass UV-stabilised and 100% virgin polycarbonate base (thermal résistance -100°C to +120°C)
- 6 spikes of 11cm
- 302 Stainless-steel wire / Steelinox®+ wire Ø 1,2 mm spikes.
- Holes on the strips : for screwing or nailing
- Width protected : up to 3cm.
- Protection : pigeons.

## PACKAGING :

- 20 linear meter, so 55 units.
- Packaging dimensions : 40 x 20 x 11cm box for 1,39 kg.

## ECOPIC® RECOMMENDATIONS :

- Do not use this product on greasy or wet surfaces, or where the ambient temperature is under 5°C.
- Do not apply when surfaces have been (or will be) treated with water repellent. In general, check the compatibility with our products.

**Adhesive :** We recommend our SELFIXING® silicone adhesive, witch is specially suited to use with ECOPIC® EV6.

**Cleaning :** To optimise the preparation of surfaces and to obtain a better garanty, cleaning with our professional cleaner SELCLEANING®.

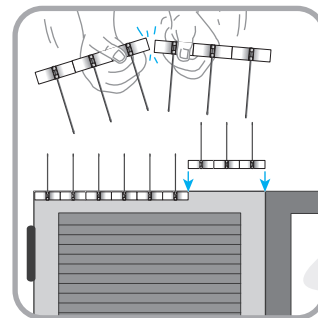
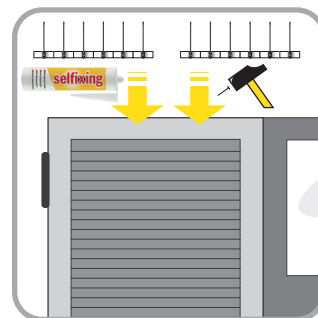
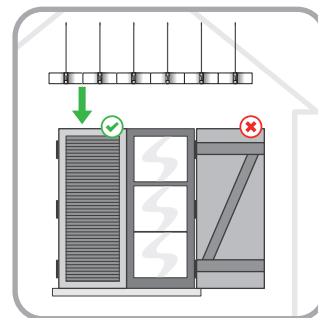
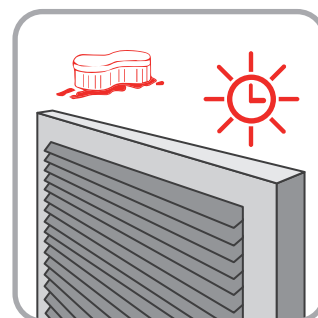
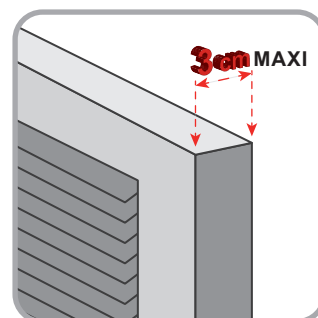
**Guarantee :** Refer to our website.

## APPLICATION :

- ECOPIC® EV6 can be applied to any shutters (wood, aluminium, and more) with silicone, screws or nail.
- Before application the surface must be clean, dry, safe and solid.

## INSTRUCTIONS FOR USE :

- See the installation sheet



## ECOPIC

ZAC DU MOULIN  
 12 RUE DU MEUNIER  
 95700 ROISSY EN FRANCE

PHONE: +33.1.73.27.20.40

FAX: +33.1.30.11.24.55

EMAIL: ECOPIC@ECOPIC.COM

WWW.ECOPIC.COM

SAS AU CAPITAL DE 140 000€  
 401 788 120 RCS PONTOISE  
 SIRET 401 788 120 00046  
 APE 4690 Z  
 TVA FR 80 401 788 120